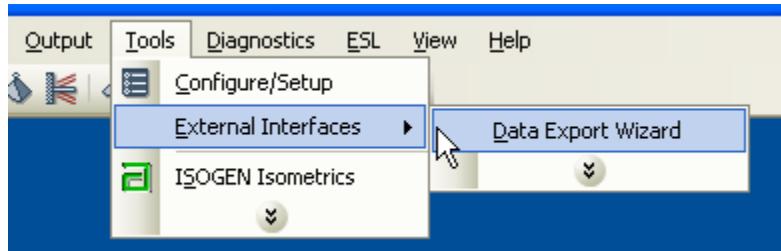


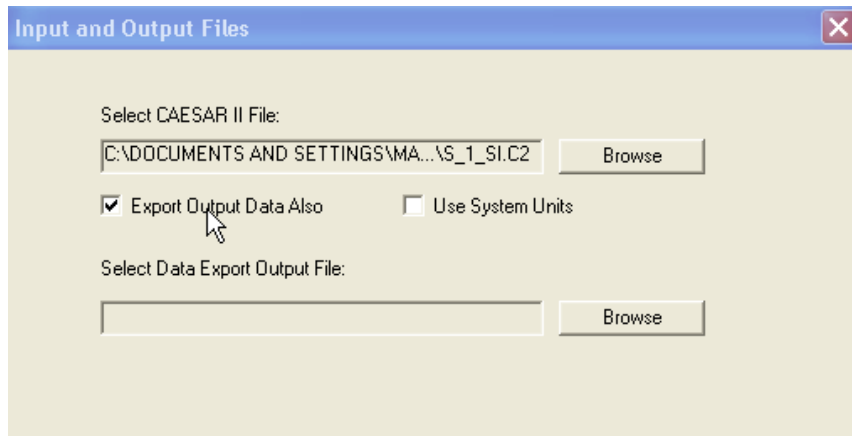
Salad Tutorial 1 – Working with Exported Data from CAESAR II

Exporting Data From CAESAR II

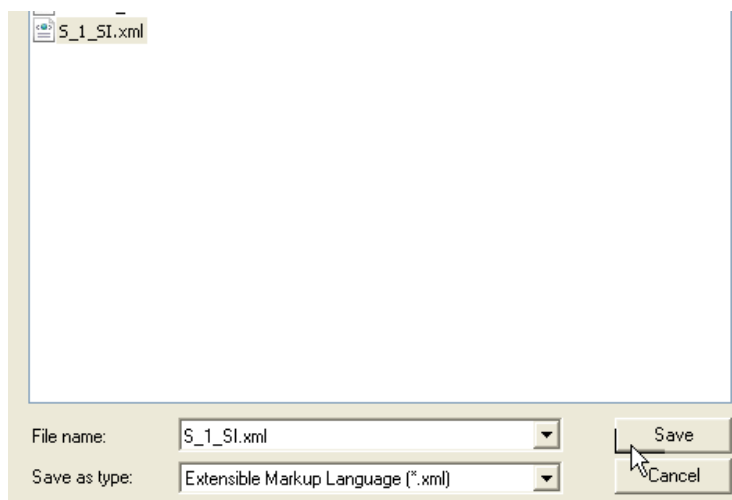
Start the Data Export Wizard from within CAESAR II (or alternatively launch it from Salad's File menu).



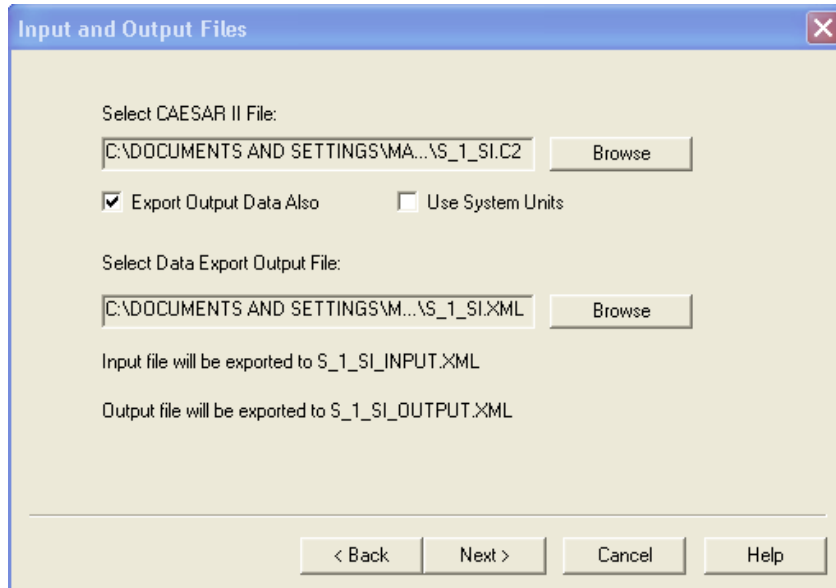
Browse to your chosen file. Make sure to click on 'Export Output Data Also' -



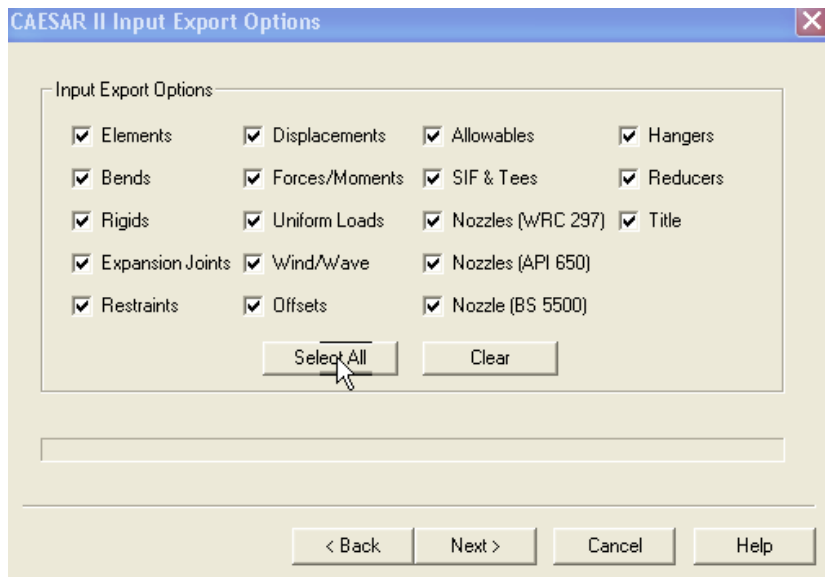
Now click the second 'Browse' button to open a 'Save as' dialog. Change the 'Save as type' dropdown to 'Extensible Markup Language (*.xml)'. Type in a file name or click on an existing .xml file name, eg the same file name as your '.c2' file. Don't worry about overwriting an existing file.



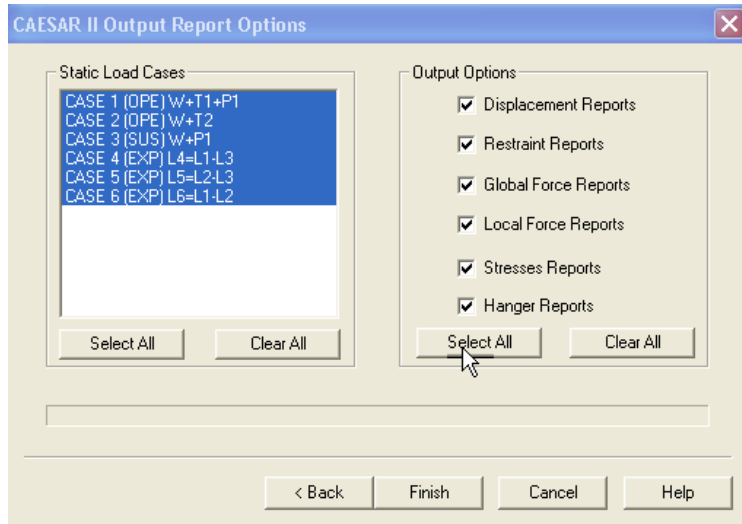
After clicking 'Save', the Wizard now shows the names of the two files (input and output) which will be exported.



Click Next to move to 'Input Export Options' and click on 'Select All'

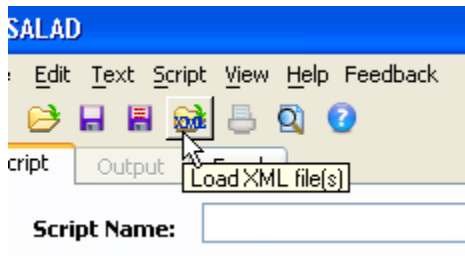


Click Next, then 'OK' to move to 'Output Report Options'. Click on both 'Select All' buttons and then on 'Finish' to complete the export.

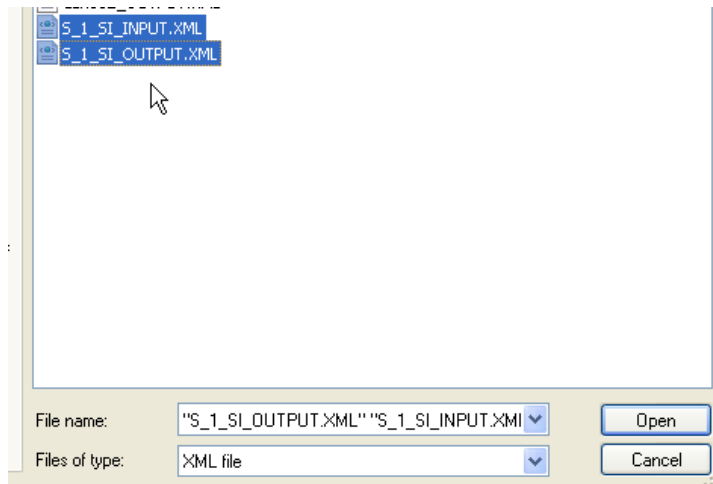


If you find you are dealing with a large and unwieldy file (as can happen with a large model with many load cases), you can repeat the process and be more selective with the exported load cases and output options.

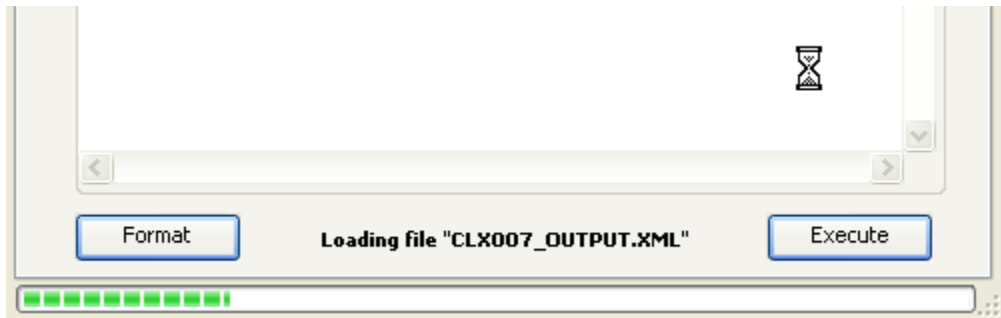
Now you can import the XML data files to Salad by clicking on the 'Load XML files' toolbar button –



Hold the Shift or Ctrl key to enable multiple selection and open both Input and Output data files.



A progress bar will appear showing the load progress. This is approximate so don't worry if the file stops loading before the progress reaches the right hand side.



You are now ready to run scripts on the data.